

The Viewfinder



President's Message By Claude Denis



In This Issue

- President's Message, pp 1-3
- Program Notes, pp 4-6
- Program Calendar, p 7
- Photo Submissions, p 8
- Photo Essay, pp 9-10
- Notices, p 11
- From the Editor's Desk, p 12
- Viewfinder Information, p 13
- Parting Shot, p 14

I knew something was up when, for the first time since as far back as I can remember (which is not as far as it used to be), I headed out for my daily walk without my camera!

To be honest, I had noticed my creativity was waning for a while, but I was in denial. Denial comes easily to men, after all. My first thought was, "could it be that there is nothing more to take photos of? Have I come to the end of my photographic experience and am I now ready for something new?" Maybe macramé, knitting, or maybe collecting stamps.

Then I saw a photo that Guy Ridgway took of the planetary alignment of Jupiter and Saturn. I thought "Wow! He took this after dark, on a cold winter night, far away from his couch. How brave!"

Continued on Page 2

President's Message Continued

Then I knew I was in real trouble when it came time to write this President's message and I was drawing a blank. My wife stepped up with ideas as we walked and not one of the dozens of prompts could stir my sleeping mind.

One evening, my wife invited me to join in on a Winter Solstice gathering on Zoom, so I did. This provided me with the answer to my problem. It didn't happen right away, sometimes it even takes me a few days (I am a man after all). The answer was clear. We are in the Winter Solstice, that time of year when we see the fewest hours of daylight and the longest nights. When the sun is at its lowest point in the sky.

"Solstice" is a Latin word that means "stalled sun", when the Earth's axis is tilted as it rotates around the Sun. That's it! That's why I feel stalled and tilted, maybe all is not lost after all. It's that time of year when everything in nature lies dormant, and maybe a time for me to rest and reflect aimlessly through those long, dark winter months. It's also a time of great stress as we fight a great pandemic that has kept us in a state of hibernation from one another and our usual ways.

But, like all great cycles in nature, the New Year is upon us, and the days will get longer and brighter and we will see an end to this pandemic. Until then I will try to be more gentle on myself and others, and try to face the darkness and let in the light as best I can.

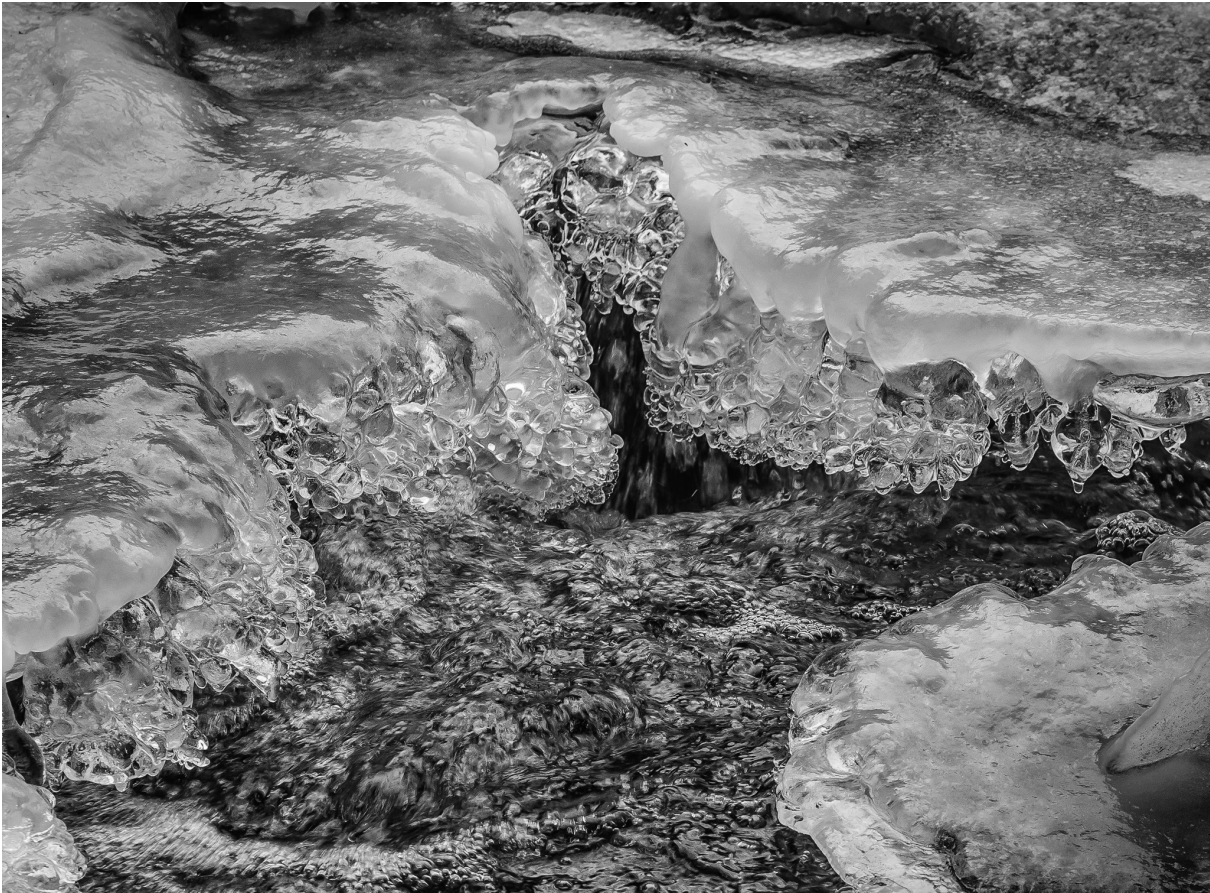
All this has led me to start planning my photo projects for the winter, in an attempt to keep the photographer alive. Here are a few ideas I had.

1. Macro snowflakes
2. Falling snow and snow storms
3. Snow landscapes
4. Water effects
5. Sunset or sunrise
6. Winter light
7. City lights
8. Street photography

I have included a few photos, enjoy ...



Continued on Page 3





Program Notes By Guy Ridgway

December Speaker – Lydia Dotto

Lydia Dotto's December 1st Zoom talk, "**Great Lakes Shores**", gave us an evening full of wonderful insights into places to visit along the shores of Lakes Ontario, Huron, and Erie for bird and landscape photography.

This was an excellent presentation. The detailed information Lydia shared on all the shoreline venues was amazing. Well done, Lydia. We wish you all the best when you make your presentation available to other clubs!

!! IMPORTANT !!

The January 5th speaker's presentation by Colin Jarvis (UK)
will begin at 4:30 p.m. (doors open at 4:00 p.m.)

!! IMPORTANT !!

January Speaker – Colin Jarvis (UK)

Please join us for our next speaker's Zoom talk on **January 5th at 4:30 p.m.**, when Colin Jarvis will be presenting, "**Mono Moods**", from Preston, England.

Please Note: This presentation will be 1.5 hours long, followed by a Q&A session. There will be a 10-minute break at the 1-hour mark.

Colin Jarvis is a professional landscape photographer based in the north west of England. His work has been featured in books and magazines as well as exhibited in London, Liverpool, and Manchester. He is a skilled practitioner in both digital and large format film photography and has taught photography in colleges and schools, and lectured at Photographic Societies. He holds a Master of Arts in Photography and is an Associate of the Royal Photographic Society. Colin has appeared in the Landscape Photographer of the Year book and subsequent exhibition, as well as in a number of photography journals.

Colin's talk, "**Mono Moods**", will present a large selection of his monochrome photography, and covers a number of genres including landscape, seascape, long exposure, architecture, and infrared. He will run through his techniques, vision, camera settings, and use of filters. This presentation will also include a 20-minute Photoshop demonstration taking a raw file to the finished image.

Website: www.colinjarvis.co.uk

Continued on Page 5

Program Notes Continued



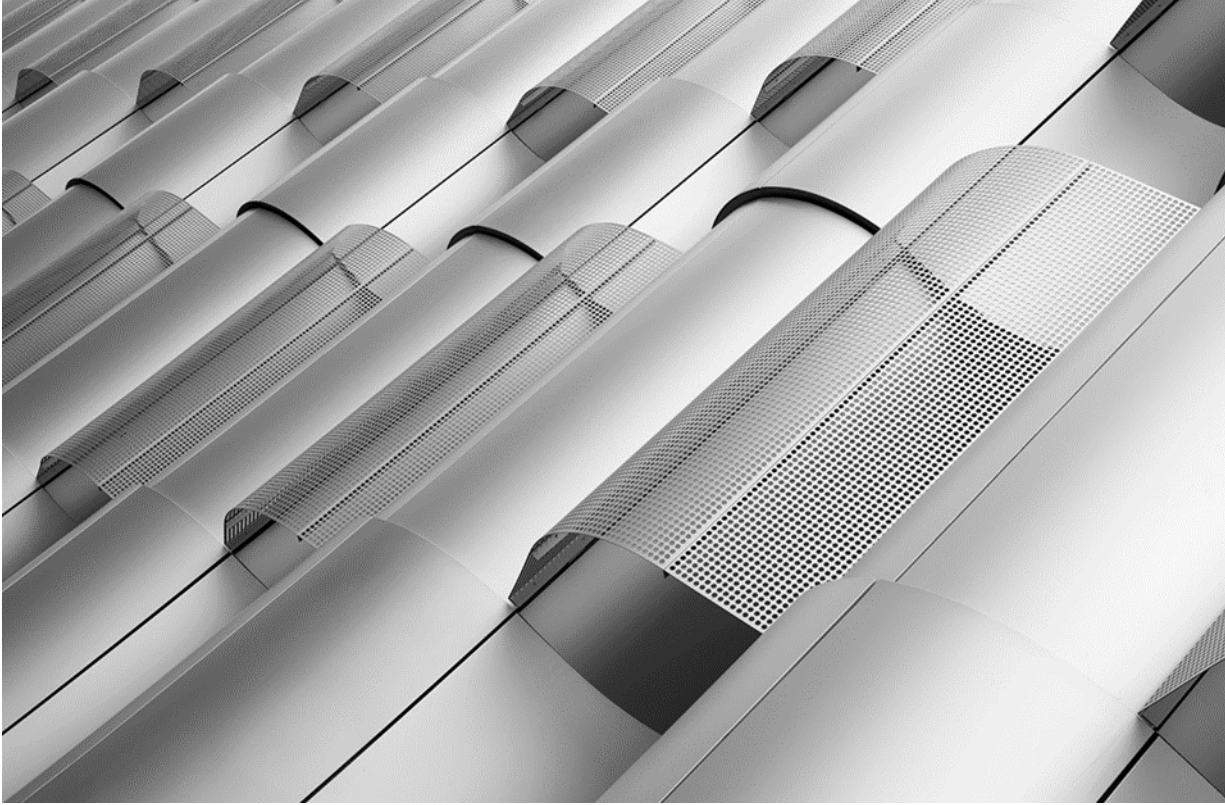
“Marine Lake”, by C. Jarvis



“Lindisfarne Castle”, by C. Jarvis

Continued on Page 6

Program Notes Continued



“Bristol University”, by C. Jarvis

About PPS Zoom-Based Presentations

For our **January 5th speaker presentation**, we will be “opening the doors” on Zoom at **4:00 p.m.**, to allow members some extra time to socialize before **the talk begins at 4:30 p.m.** Attendance will be by e-mailed invitations issued to all PPS members and registered guests on the day of the event.

The President’s introductory remarks will begin at 4:30 p.m., followed by the Membership Director’s welcome to new guests and my speaker’s introduction. **Once the talk gets underway, all members will be muted for the duration of the talk**, so as to avoid distractions. Members will be allowed to un-mute themselves once the Q&A starts, following the main event.

If you know of any non-members wishing to join us for the January 5th event, please have them contact Linda at lindacardona@sympatico.ca. Guests are permitted to attend one free Zoom event before becoming a PPS member.

Please do not hesitate to contact me or Linda Cardona for help using Zoom.

Guy Ridgway, Program Director
(PPSPrograms@gmail.com)

Program Calendar

PPS 2020-2021 Program Calendar

- ❖ The following categories comprise the monthly slideshow: **Theme**, **Outing** (see Notes, below), and **Photographer's Choice**.
- ❖ All monthly meetings are Zoom-based. Refer to “**About PPS Zoom-Based Presentations**” in the **Program Notes**.
- ❖ Zoom speaker presentations begin at 7:00 pm, **except for the January presentation, which begins at 4:30 pm**

Date	Speaker	Activity	Theme
Sep 01	Wayne Fisher – Architecture and Minimalism		Fruit Still Life
Oct 06	Ariel Estulin – Star and Night Photography		Complementary Colours
Nov 03	Rob Stimpson – Chasing Ernie		Through a Closed Window
Dec 01	Lydia Dotto – Great Lakes Shores		Vintage/Old
Jan 05	Colin Jarvis [UK] – Mono Moods ** 4:30 pm **		Black & White
Feb 02	Lola Reid Allin – Chile: Top to Bottom		Tools of the Trade
Mar 02	Don Komarechka – Macro Photography		Upside Down
Apr 06	Michelle Valberg – TBA		Reflections
May 04	Cindy Taylor – TBA (Travelogue Photography)		Street Scene
Jun 01	TBA		Porches

Notes:

- ❖ Speakers and presentation dates are subject to change, with notice to members.
- ❖ Outings: One per month, each photographer chooses own location, different location each month, up to 3 images per location.



Photo Submissions

Submitting Photos for Slide Shows

The following is the information you need to submit images for the Monthly slideshows at www.peterboroughphotographicsociety.com

If you have any questions, suggestions or comments about the slideshow, including the music, please let me know at photos@peterboroughphotographicsociety.com

Members may submit up to three images each for monthly Theme, six images for Photographer's Choice, and up to three images for each Outing. Please note that the Theme images should be shot within the current year of the club. The deadline for submitting your images is always the Tuesday before the meeting, at midnight.

Before submitting your images they must be titled and re-sized as instructed below. Images must be JPEGs. First, select the images you wish to submit into the PPS Categories, and copy them into a folder. Re-size your images: If the image is landscape orientation (wider than tall) make the width 1024 pixels and let the height float. If portrait, make the height 768 pixels and let the width float. Correct sizing greatly improves the appearance of image titles. No cropping is required. After re-sizing them give each image a simple title, such as "Lift Locks At Sunset.jpg". DO NOT ADD YOUR NAME (the system will automatically put your name on the image for our presentation).

Go to <http://www.peterboroughphotographicsociety.com/>, then to HOME, then to IMAGE SUBMISSIONS, and then to DROPBOX LINKS FOR IMAGE SUBMISSIONS. The first link you will see on this page is "Preparing Images or Video for Club Slideshows". Please click on this to find out all you need to know to submit images. Now, go back to the DROPBOX LINKS FOR IMAGE SUBMISSIONS page. Scrolling down the page you will see all the categories we use: Theme, Photographer's Choice, Breakfast Outings and Regular Outings, Member Slideshows and Video Submissions, Miscellaneous Files, and Brown Bag. Here you will also see a brief description of each category. Also, you will see each category highlighted in blue. This will be the link to click on to submit your images. Click on the blue link and this will take you to a Dropbox page asking you to choose your files. Click this icon and it will open a page where you can select the images you wish to submit (you do not need a Dropbox account and do not need to Sign In to Dropbox).

Members must not attempt to submit folders of images, even though Dropbox presents that as an option. Highlight your selected images and click on "Open" at the bottom right hand corner of the pop-up. This will direct you to a page showing you which category you have selected, will show you the images you have selected, and ask you for your name and e-mail. After typing this information click on Upload at the bottom of the page. And that is all there is to it. I know in print it sounds like a lot, but in reality it is very quick and smooth. Now, close the page and go to the next category and repeat the instructions.

SUBMISSION MUSTS: Please read and try to keep these four simple guidelines in mind when submitting your images each month.

SUBMISSION DEADLINE: Images must be submitted before midnight on the Tuesday one week before the monthly meeting. Images submitted after this time may not be included in the slideshow.



Photo Essay

Bergs!

Several years ago, I travelled to Iceland for a photography workshop. We spent most of our time along the southern coast of the island. For the better part of two days we wandered around the shores of a glacial lagoon full of icebergs. The bergs break off the glacier, and fall into the lagoon, then make their way out to the ocean, and southward.

I was amazed at the variety of colours of the icebergs, various shades of blue and white. Many of the bergs had black layers through them. This is volcanic ash, that was laid down during past volcanic eruptions.



Continued on Page 10

Photo Essay Continued



Notices

Outings

Outings
are
On Your Own
and
At Your Convenience

THEME

<https://www.dropbox.com/request/bPYd3c9adqfXlofHT2Bg>

PHOTOGRAPHER'S CHOICE

<https://www.dropbox.com/request/rFJf6AJYhx7p5OaqAaaO>

REGULAR OUTINGS

<https://www.dropbox.com/request/gvt47J5XOkzngcFKBFly>

BREAKFAST OUTINGS

<https://www.dropbox.com/request/pacpHj3UezS1cuoJchcA>

MEMBER SLIDE SHOWS AND VIDEOS

<https://www.dropbox.com/request/CNjrOWgqC4o3Zu8ixDVO>

MISCELLANEOUS FILES

<https://www.dropbox.com/request/86CXhKvxLCPtXRKgfndI>

BROWN BAG

<https://www.dropbox.com/request/N3ZwiIwkSeHLOWngB5uN>

Themes

Jan.: Black & White

Feb.: Tools of the Trade

Mar.: Upside Down

Apr.: Reflections

May: Street Scene

June: Porches

Do You Need Help With Computer Work?

Any member who needs help with the computer aspects of photography may feel free to approach our Web Master, George Giarratana, at any meeting for advice and assistance. Issues with post-processing, cropping, preparing photos for export, etc., are the things that George can help you with.

photos@peterboroughphotographicsociety.com



From the Editor's desk By Judith Bain

Your Newsletter Needs You!

This is a reminder to all PPS members that ***The Viewfinder*** is YOUR newsletter.

We can only continue to publish our monthly editions if we have contributions from the membership. Please contribute to the PPS by sending articles, photos, and photography-related information for inclusion in *The Viewfinder*. Thank you!

Please Note: If you like to participate in photo contests, please look at this web site: <https://www.photocontestinsider.com/>

**January Meeting
To Be Held Virtually
Using
ZOOM
January 5th, 2021
4:30 p.m.**

FOR SALE

Epson Claria 1400 Printer ... Free

Call Sheila @ (705) 748-3535

Manfrotto Tripod 290 ... \$95.00

Very stable, Excellent Condition

Call Heather @ (705) 748-2222

Viewfinder Seeks Submissions From Members

The Viewfinder invites PPS members to submit their work for any of the following features:

- The Story Behind the Photo:** Send in one or more photos and the story behind them.
- Photo Essay:** Send in a series of photographs on a topic or location.
- Insights:** If you would like to contribute an essay with photos on anything to do with photography, you are welcome to send it to us.
- The Parting Shot:** Send in a an entertaining photo that you have taken.

The Viewfinder



Editorial

Editor: Judith Bain

Columns

President's Message: Claude Denis

Program Notes: Guy Ridgway

Photo Submissions: George Giarratana

Contributors

Brian Crangle, Judith Bain

PPS Executive, 2019 - 2020

President: Claude Denis

Vice-President: Vacant

Secretary: Guy Ridgway (Acting)

Treasurer: Kathryn Danford

Past-President: Margaret Hamilton

Outings Director: Vacant

Program Director: Guy Ridgway

Membership Director: Linda Cardona

Social Media Director: Linda Cardona

Member-at-Large: Vacant

Member-at-Large: Vacant

Projectionist: George Giarratana (Acting)

Web Master: George Giarratana

The Viewfinder Editor: Judith Bain

Contact Us

The Viewfinder is the newsletter of the Peterborough Photographic Society. It is published 10 times a year from September to June.

Write to us or send us your stories, images, articles, poetry, ideas, and your humour, here at

ppsviewfinder@gmail.com.

You can also visit our website at:
www.peterboroughphotographicsociety.com.

We're also on Facebook! You can find us at www.facebook.com/PeterboroughPhotographicSocietyCanada.

Submissions to The Viewfinder

We encourage PPS members to submit their photos and personal news, as well as articles, poetry, writing, and humour about photography and our club.

Text submissions should be in one of the following file formats: .doc, .rtf, .odt, or .pub. Image files in formats such as .jpeg, .tiff, .gif, or .png graphic file.

The Editor reserves the right to edit all submissions for size, content, and style without consultation.

All content remains the intellectual property of the creators, and copyright is held by them. It may not be copied, reproduced, printed, modified, published, up-loaded, down-loaded, posted, transmitted, or distributed in any way without written permission.



The Parting Shot

By Brian Crangle

Silly Santa!

