

The Viewfinder

*Newsletter of the Peterborough Photographic Society
November 2021*



In This Issue

President's Message, pp 2-3
Program Notes, pp 4-8
Outings, p 8
Program Calendar, p 9
The Challenge, pp 10-11
Memberships, p 12

New Feature, p 13
Image Submissions, pp 14-15
From the Editor's Desk, p 16
Notices, p 17
The Viewfinder Information, p 18
The Parting Shot, p 19



Terry Carpenter

"Sunrise, Lake of Two Rivers", by Terry Carpenter

The Viewfinder

Newsletter of the Peterborough Photographic Society
September 2021



President's Message

Composition is King

No matter what type of camera you use, no matter your experience or how you perceive your own abilities, there's one over-riding facet of photography that everyone can approach and use to make their images more engaging. It's not about f-stops, shutter speeds, ISO settings, or filters.

Although I can't claim any real expertise in this respect, I do believe that composition is 90% of what makes a photograph grab a viewer's attention, and it's what I strive to improve upon in my own captures. Not surprisingly, it also happens to be one of the most difficult aspects of the craft to master. Some believe that professionals have a natural talent to recognize a great composition, but I think that, to a large extent, it can be learned.

Of course, there are composition "rules", familiar to most artists. Any number of sources on the web are available for those looking to "up their game". The rules are the tried-and-true criteria to achieve better results in various photographic genres (yes, the rules can vary for different genres).

It all comes down to basics in design. Most of what makes a good composition occurs when deciding how to line up your shot and part of it occurs in post processing by, say, emphasizing or de-emphasizing elements of a scene or by removing distractions completely. It has a lot to do with your "vision" of how you want the final result to appear (and to have a vision of the result before you press the shutter button is also a big composition consideration).

Jacob Surland, a fine art photographer, has very practical ideas about the subject. He's written an article that includes, but goes well beyond, the standard compositional elements, i.e., the rule of thirds, leading lines, S-curves, points of interest, etc. He also discusses framing; foreground, middle ground, and background; focusing; odd numbers; repeating objects or shapes; breaking the horizon; and not chopping things off.

Jacob's articles:

caughtinpixels.com/get-the-shot/fundamentals-composition

caughtinpixels.com/about-composition-sometimes-centering-works

Continued on Page 3

President's Message Continued

According to Joshua Cripps, composition is one of the four elements that are essential for an attention-grabbing image. He expresses it metaphorically:

As you probably know, your heart has four essential chambers, and it needs each of those four chambers in order to function. Well, it turns out that every successful landscape photo is also built from four essential parts:

A strong subject and story

A compelling composition

Good camera technique

Interesting light

Joshua's take on composition: joshuacripps.com/?s=composition

As your Program Director, thinking about composition has made me begin to consider a new program feature: members' photo critiques. To make that happen I believe we need to involve outside experts, e.g., competition judges. An occasional PPS critique session could be handled either in-person, or perhaps even more effectively, remotely via the Zoom app. Critiques have been tried in the past, well before I joined PPS, but I'd like to see the idea revived and with a positive emphasis on helping members improve their skills – it's time to make it happen, and it requires input from qualified judges. Stay tuned for more on this initiative.

Once you've gained proficiency in the "rules" of composition, you'll want to break them to develop your own style (to align with your vision), but if you've studied the basics at least you'll know why you're breaking them.



“Tŵr Mawr Lighthouse, Anglesey”, by Guy Ridgway



October Speaker – Sharon Tenenbaum – My Story / The Art of Architecture

Wow! Sharon's presentation of her masterful monochrome images was accompanied by a narrative that was both inspirational and educational. This is an artist who has established not just one self-defining style, but several – and she introduced us to a brand-new way of expressing herself during her talk. When asked how she performed her latest photographic magic she had to apologize for being restricted by her gallery directors from divulging her secrets – the techniques are simply too new.

This was not only about herself, she emphasized how composition was so elemental to her work – from photo composites made from bicycle parts depicting Vancouver cityscapes and landscapes to her highly stylized bridges.

She spoke at length about her vision and how she developed it, still closely tied to composition. It was the importance of how we, as artists, need to have a vision before we release the shutter that she stressed. She showed us how she has paid great attention to several photo artists who strongly influenced her approach to her art and stressed the importance of continually surveying the work of others.

Sharon's presentation, besides serving us a smorgasbord of expert works of art, illustrated unique ways for us to think about how we approach the art of photography.

Website: sharontenenbaum.com

Facebook: facebook.com/sharontenenbaumphotography

Pinterest: pinterest.com/sharontenenbaum

November Speaker – Nic Stover – Evaluating & Working with Light

Please join us on **Tuesday, November 2, at 7:00 p.m.** to welcome **Nic Stover**, an accomplished landscape photographer, traveller, and educator based in San Luis Obispo, California.

His presentation focusses on: *"Not too Heavy, Not too Light. Just right. Evaluating and working with light in Photography."*

In Nic's own words ...

There are so many ways to think about the different types of light within our photography and what we can do with what we get on location, but also when we get back in front of the computer to process the light we "harvested" in the field. In this presentation I talk about how the most important thing in photography is you and how you look through the light harvester (i.e., the camera) and the decisions you make on how to collect the light that is falling in front of you onto your subjects.

Continued on Page 5

Program Notes Continued

I have neither mastery of light nor the power to control it, but I will talk about what I CAN control, i.e., how I react to the light I am given, not the light I want, but what I am given.

I consider the science and study of light to be one of our most important pursuits in photography. This presentation will increase your understanding of how to work with light. Some of the topics covered in this presentation include, but are not limited to:

1. How to think about light.
2. How we view light vs. how our camera (light harvester) views light.
3. How do we actually see light from the warms and cools to the brights and darks.
4. What is the true value of light in our images?
5. How do photographers describe and talk about light?
6. What are the 4 ways in which light interacts with our scenes?
7. How can you most effectively use light in your images.
8. Ways you can break out of your normal mode of working with light.

Website: stoverphoto.com

Please Note: This presentation will be approximately 1 hour long, followed by Q&A. The presenter prefers that attendees reserve their questions until the end of the presentation.

Watch for your Zoom invitation by email and be sure to join us for a special evening with Nic.



Continued on Page 6



Continued on Page 7



Continued on Page 8

About PPS Zoom-Based Presentations

For our November 2nd speaker presentation, we will be “opening the doors” on Zoom at 6:30 p.m., to allow members some extra time to socialize before **the talk begins promptly at 7:00 p.m.** Attendance will be by e-mailed invitations issued to all PPS members and registered guests close to the day of the event.

The President’s introductory remarks will begin at 7:00 p.m., followed by the Membership Director’s welcome to new guests and my speaker’s introduction. **Once the talk gets underway, all members will be muted for the duration of the talk** to avoid distractions. Members are encouraged to ask questions at the end of the talk by pressing the spacebar (on a PC or a Mac) or otherwise temporarily unmuting themselves (on tablets or phones).

If you know of any non-members wishing to join us for the November 2nd event, please have them contact Linda at ppsmembership@gmail.com. Guests are permitted to attend one free Zoom event before becoming a PPS member.

Please do not hesitate to contact Linda Cardona or me for help using Zoom.

Guy Ridgway,
Program Director
(PPSPrograms@gmail.com)



Outings By Dave Duffus

The November Outing will be held on Saturday, November 13th. We will meet at 10:30 a.m., at the Trent Wildlife Sanctuary on University Road, which runs north from Division Road.

This is Trent University’s oldest Nature Area. It is located in the south east corner of the Symons Campus and it includes many types of eco-systems and a robust trail network.

We will meet there, and there will not be a get-together afterwards.



Photo Courtesy of the Peterborough Examiner

Program Calendar

- ❖ The following categories comprise the monthly slideshow: **Monthly Theme**, **Outings** (see Notes, below), and **Photographer's Choice**.
- ❖ Meetings Sep-Dec are Zoom-based, **Jan-Jun are in-person**
- ❖ Speaker presentations begin at 7:00 pm, unless noted otherwise.
Note the Monday, October 18, date
- ❖ Sep-Dec: **Let's Talk Photography**: 3rd Tue each month.

Date	Speaker	Activity	Theme
Sep 07	Michael Chinnici – Evoking Emotion		Silhouette
Oct 18	Sharon Tenenbaum – My Story/The Art of Architecture	Location Challenge	Charming Places
Nov 02	Nic Stover – Evaluating & Working with Light		The Colour Orange
Dec 07	TBA	Location Challenge	Hats or Caps
Jan 04		My Photography Members' 5-Slide Essay	Frame in a Frame
Feb 01		Location Challenge Pick Up Your Empty Brown Bag	Negative Space
Feb ??		Workshop?	
Mar 01	TBA	My Photography Leave a Brown Bag, Get a Brown Bag	High Key
Apr 05		Location Challenge Brown Bag Photos	From a Low Angle
May 03	Cindy Taylor – My Journey Through Travel Photography	My Photography 5-Minute Slide Shows	Pastime
Jun 07		BBQ Executive Election Location Challenge Annual Members' Slide Show	Macro Flowers

Notes:

- ❖ Outings: Sep-Dec: One outing per month, Outings Director specifies location, date, time. No sign-up required. If unable to attend on specified date, choose any date in following week.



The Challenge By Brian Crangle

The Challenge for October is a little different. As most of you are aware, my good friend of 30 years, George Dimitroff, was the first victim of Covid 19 in the City of Peterborough. Not only was this a shock, as we had worked together for 20 years, but George was very fit and in good shape. He rode his bicycle to Lakefield regularly and was a mere 68 years old!

In his memory, his wife, Sheila, along with his family and friends, had a memorial bench erected in Lakefield. The bench is located on the east bank of the river at the Marina, just off the south-west corner of Isabel Morris Park.

Your challenge is to photograph the location to include all or part of the bench. I realize that this is a rather tricky assignment. Be creative and think outside the box. Perhaps we could say a word or two to George while we are there.

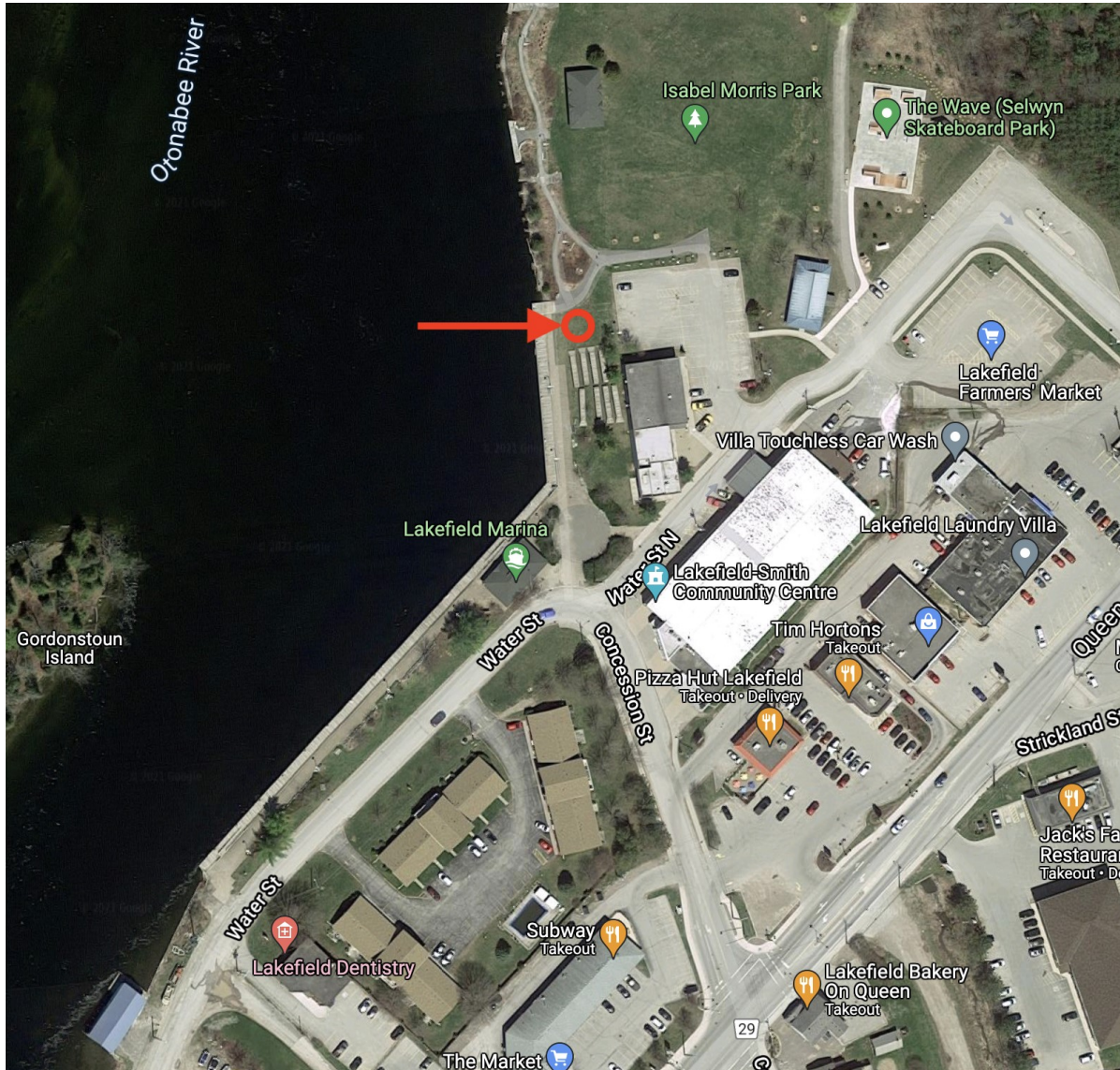
By the image submission deadline, October 26, submit one Challenge image through the Miscellaneous Dropbox link via the "Dropbox Links for Image Submissions" page on the PPS web site.

Thanks to Lydia and Linda for the theme suggestion.
Looking forward to seeing your images.
Brian



Continued on Page 11

The Challenge Continued





Memberships By Linda Cardona

Only a few people remain who have not renewed this year. The payment instructions are below. Please note that anyone who hasn't paid by November 1st will no longer be invited to any PPS meetings.

Single \$50.00, Couple (same address) \$75.00, Students \$20.00

Please note, there are three easy ways to pay: by cheque, by E-transfer, or with cash. If you have any questions, please feel free to contact me at ppsmembership@gmail.com

Cheques:

- Cheques should be made out to PPS
- Mail / Drop off to Tim Young: 704 Ford Cres, Cavan, ON L0A 1C0
- Tim will mail out a receipt and membership card
- Tim's e-mail: tycl@nexicom.net
- Tim's phone: 705-313-9606

E-Transfer:

- E-transfer to Tim's e-mail: tycl@nexicom.net
- Tim will mail out a receipt and membership card
- Security Question: Where is our club located?
- Top secret security question answer: Peterborough

Cash:

- Drop off cash at Linda Cardona's House. Call / e-mail in advance.
- 421 Albertus Ave, Peterborough.
- Linda will provide a receipt and a membership card
- Linda's e-mail: ppsmembership@gmail.com
- Linda's phone: 705-772-5564

Facebook

PPS has a public Facebook Page (anyone can see it) and a private Facebook Group (only open to current members of PPS).

The private Facebook Group is a great way to keep up to date on all key dates and events happening within PPS. It is also an open venue for members of PPS to share their images, to post questions or to have discussions. If you are currently not part of the PPS Private Facebook Group and would like to be, please get in touch with Linda at ppsmembership@gmail.com.



New Feature By Linda Cardona

Coming in December, there will be a new column in The Viewfinder called “Before and After”.

The premise of “Before and After” is for members of PPS to show both an original (un-processed) image and a finalized (post-processed) image. Through these examples, we will see how members have taken their images to the next step and have used post processing to complete their vision. Post processing can involve anything from removing a distraction, to adding special effects or even combining images (or parts of images) together. Each month one member of PPS will show a Before image and an After image along with some brief explanations of the post-processing steps that were involved.

All members of PPS are encouraged to submit Before and After images to show the effects of their post-processing efforts. Any post-processing software is acceptable. If you are interested in sharing a Before image and an After image along with a brief outline of the steps taken during post processing, please contact Linda Cardona for further information.



“Sunrise”, by Judith Bain

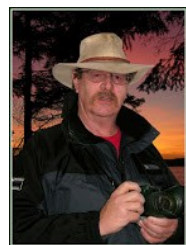


Image Submission Guidelines by Terry Carpenter

Members can submit up to **three images each for monthly theme, and six images for photographers choice, and up to three images for each outing.** Please note that the Theme images should be shot **within the current year of the club.**

Outing images submitted must be from the **current outing and from the same day as the outing.** **Due to risks of COVID-19, outings may be scheduled for weekdays. During the pandemic, if you are working or have other commitments for the scheduled day, you can shoot the outing images at your leisure. However, they still must be from the chosen location and shot within the week (7 days) after the original assigned outing date.** If you have images from a previous outing, they can be submitted into the PC category. Images must be submitted by the **Tuesday Midnight** before the monthly meeting. Images submitted after this time may not be shown.

Before submitting your images Please title and re-size as instructed below. Images must be in JPEG. We prefer that the images be down-sized, but if there is a problem with down-sizing just send them in full size and they will be sized before going into the slide show.

Re-sizing your images:

Images must be submitted in JPEG format. It is recommended, but not mandatory, that images be re-sized according to the following standards:

If the image is landscape orientation (width greater than height), re-size the width to be 1024 px and allow the height to adjust automatically.

If the image is portrait orientation (height greater than width), re-size the height to be 768 px and allow the width to adjust automatically.

If the image is square, re-size it to 1,024 px on any side.

After re-sizing them, give each image a simple title, such as Lift locks At Sunset. **DO NOT ADD YOUR NAME.** The new system will automatically put your name onto the image for presentation.

If you wish to see a short video on re-sizing using FastStone Photo Re-sizer, please go to

<https://youtu.be/acEKGxTJpSQ>

To submit your images please go to <http://www.peterboroughphotographicsociety.com/> then to Home and then to Image Submission. The first thing you will see on this page is Preparing Images for Club Slideshow. Please click on this to find out all the information for submitting images.

Continued on Page 15

Image Submission Guidelines Continued

Now go back to the Image Submission page. Scrolling down the page you will see all the Categories we use. Theme, Photographers Choice, Breakfast Outing, Outing, Members Slideshows, and Miscellaneous Files. Here you will also see a brief description of each category.

You will see each category highlighted in blue. This will be the link to click on to submit your images. Click on the blue link and this will take you to a Dropbox page asking you to choose your files. Click this icon and it will open a page where you can select the images you wish to submit (you do not need a Dropbox account and do not need to Sign In to Drop-box). **Please do not attempt to submit folders of images, even though Dropbox presents that as an option.**

Highlight your selected images and click on "Open" at the bottom right hand corner of the pop-up. This will direct you to a page showing you which category you have selected, show you the images you have selected, and ask you for your name and e-mail. After typing this information click on Upload at the bottom of the page. And that is all there is to it. I know in print it sounds like a lot, but in reality it is very quick and smooth. Now, close the page and go to the next category and repeat the instructions.

If you would rather have the Dropbox Links on your desktop instead of going to the website please see instructions below or go to <https://youtu.be/FoOfCviPuSk> to see a short video.

PLACING DROPBOX ICONS ON THE DESKTOP

1 Go to the PPS website and go to the IMAGE SUBMISSIONS on the left hand side then go to DROPBOX LINKS FOR IMAGE SUBMISSION.

2 Proceed down the page to one of the blue highlighted links such as THEMES OR PHOTOGRAPHERS CHOICE etc..

3 Click on the blue highlighted link. This will now take you to the Dropbox website. No need to click on any of the buttons.

4 At the top of the page in the URL box you will see something like *https://www.dropbox.com/request/bPYd3c9adqfXlofHT2*

HIGHLIGHT AND COPY THE ADDRESS IN THE URL BOX.

5 Almost done. Now go to your desktop and RIGHT CLICK ON A BLANK AREA. In the drop-down menu GO TO NEW AND THEN TO SHORTCUT. A BOX WILL POP UP called **Type the location of the item** PASTE THE COPIED URL IN THIS BOX AND THEN HIT NEXT.

6 NOW IT WILL ASK YOU TO TYPE A NAME FOR THIS SHORTCUT. TYPE IN THE NAME YOU WOULD LIKE FOR THE SHORTCUT SUCH AS THEME OR PC ETC. Now click on finish.

7 Go to your desktop and you will now see a new icon titled THEME etc. If you click on this it will take you to the appropriate Dropbox location where you can now submit your images.

8 Repeat the above instructions for the rest of the PPS themes.

Please make sure the pictures you send are placed into the correct Dropbox category. Images sent in the wrong Dropbox will automatically be placed into the category to which you have sent them.

MAY I SUGGEST YOU SAVE THIS LETTER IN A SAFE PLACE OR PRINT IT FOR FUTURE REFERENCE.

Thanks for your cooperation.

Thanks for submitting your images and we look forward to viewing your pictures. Any problems please don't hesitate to contact me at tcarp@cogeco.ca



From the Editor's desk By Judith Bain

Your Newsletter Needs You!

This is a reminder to all PPS members that *The Viewfinder* is YOUR newsletter.

We can only continue to publish our monthly editions if we have contributions from the membership. Please contribute to the PPS by sending articles, photos, and photography-related information for inclusion in The Viewfinder. Thank you!

The Viewfinder Seeks Submissions From Members

The Viewfinder invites PPS members to submit their work for any of the following features:

- ◆ **Cover Page Photo:** Send a favourite photo to grace the Cover Page of the next issue.
- ◆
- ◆ **Before and After:** Send two photos, one before processing, and the same photo after processing, with a brief explanation of your processing steps.
- ◆ **The Story Behind the Photo:** Send in one or more photos and the story behind them.
- ◆ **Photo Essay:** Send in a series of photographs on a topic or location.
- ◆ **Insights:** If you would like to contribute an essay with photos on anything to do with photography, you are welcome to send it to us.
- ◆ **The Parting Shot:** Send in an entertaining photo that you have taken.

Notices

Outing

November 13th
10:30 a.m.

The Trent Nature
Sanctuary

THEME

<https://www.dropbox.com/request/bPYd3c9adqfXlofHT2Bg>

PHOTOGRAPHER'S CHOICE

<https://www.dropbox.com/request/rFJf6AJYhx7p5OaqAaaO>

REGULAR OUTINGS

<https://www.dropbox.com/request/gvt47J5XOkzngcFKBFIy>

LOCATION CHALLENGE

<https://www.dropbox.com/request/H5U4KXKlxxmtu4ei4kOz>

BREAKFAST OUTINGS

<https://www.dropbox.com/request/pacpHj3UezS1cuoJchcA>

MEMBER SLIDE SHOWS AND VIDEOS

<https://www.dropbox.com/request/CNjrOWggqC4o3Zu8ixDVO>

MISCELLANEOUS FILES

<https://www.dropbox.com/request/86CXhKvxLCPtXRKgfndI>

BROWN BAG

<https://www.dropbox.com/request/N3ZwiIwkSeHLOWngB5uN>

2021~2022 Themes

December: Hats or Caps

January: Frame in a Frame

February: Negative Space

March: High Key

April: From a Low Angle

May: Pastime

June: Macro Flower

Do You Need Help With Computer Work?

Any member who needs help with the computer aspects of photography may feel free to approach our Web Master, George Giarratana, at the e-mail address noted below. Issues with post-processing, cropping, preparing photos for export, etc., are the things that George can help you with.

photos@peterboroughphotographicsociety.com

Next Meeting To Be Held Virtually Using ZOOM

November 2nd, 2021
7:00 p.m.

Doors Open @ 6:30 p.m.

The Viewfinder



Editorial

Editor: Judith Bain

Columns

President's Message: Guy Ridgway

Program Notes: Guy Ridgway

Photo Submissions: Terry Carpenter

Memberships: Linda Cardona

Outings: Dave Duffus

Contributors

Terry Carpenter, Brian Crangle, Linda Cardona, Judith Bain

Submissions to The Viewfinder

We encourage PPS members to submit their photos and personal news, as well as articles, poetry, writing, and humour about photography and our club.

Text submissions should be in one of the following file formats: .doc, .rtf, .odt, or .pub. Image files in formats such as .jpeg, .tiff, .gif, or .png graphic file.

The Editor reserves the right to edit all submissions for size, content, and style without consultation.

All content remains the intellectual property of the creators, and copyright is held by them. It may not be copied, reproduced, printed, modified, published, uploaded, down-loaded, posted, transmitted, or distributed in any way without written permission.

PPS Executive, 2021 - 2022

President: Guy Ridgway

Vice-President: Vacant

Secretary: Caroline Ridgway (Acting)

Treasurer: Tim Young

Past-President: Claude Denis

Outings Director: Dave Duffus

Program Director: Guy Ridgway

Membership Director: Linda Cardona

Social Media: Linda Cardona

Member-at-Large: Kathryn Danford

Member-at-Large: Margaret Hamilton

Projectionist: Terry Carpenter (Acting)

Web Master: George Giarratana

Editor, The Viewfinder: Judith Bain

Contact Us

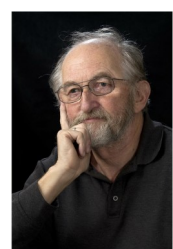
The Viewfinder is the newsletter of the Peterborough Photographic Society. It is published 10 times each year from September to June.

Write to us or send us your stories, photos, articles, poetry, ideas, and your humour, here at ppsviewfinder@gmail.com.

You can also visit our website at:

www.peterboroughphotographicsociety.com.

We're also on Facebook! You can find us at www.facebook.com/PeterboroughPhotographicSociety



Introducing BeeBee Crangle (aka B.B.C)

