



# The Viewfinder

Newsletter of the Peterborough Photographic Society

January 2013

**President - Liz Crangle Vice President - vacant Past President Terry Carpenter Membership Director - Dawn Macklin Member at Large - Paul Macklin Program Director - Carol Pearson/Brian Crangle Secretary - Sarah Tanner Treasurer - Joanne Stockton Projectionists - Terry Carpenter, George Giarratana Outings - Bob Brown Webmaster Cathy Schofield Viewfinder Editor George Giarratana (705) 768-0374**



## President - Liz Crangle -

Hello Everyone!

I guess we can safely say that 2013 is well under way. Certainly the days seem to be stretching out and without our usual accumulation of the white stuff there seems to be an hour or two during the day when it seems a little like Spring!! What a strange January we have had. As I look out the window at a green lawn with few birds, I reflect that this is still not the best time for photography....it being somewhat cold - and bare. But wait! There is more to photographic life than a straight horizon line out in the great outdoors!!! Maybe this is the opportunity to hone up on our indoor photography. Different venues, different skills - and you don't have to bundle up! Plus, the theme for February is 'Money' .....just ask your significant other/ friend for a loan and away you go! Get out the tripod, find that bright but shady spot in your home and have some fun. Design, macro, all kinds of ideas come to mind.

In a few months we will not be doing any of the above. Before we know it it will be May - the month we hold the elections for a new executive. And all positions are up for someone new to take over the administration of our Club. It wasn't just for the fun of it - or for the lack of news, that I posted the executive, with photographs and positions, on the notice board. It was, hopefully, so that you - the membership - might be inspired to start asking us just what the job entails. In other words you may be inspired to start thinking that possibly you could do that job, and bring fresh thinking and new ideas to our Club. It is not too early to start thinking, questioning and hopefully deciding. Go for it!!

Until then make sure to check out Bobs plans for Feb. outing!!

See you all on Feb.5th!..... Liz



## Program Notes.

Program Notes Feb 2013.

Well it was a grand evening on Jan 8th. We had a good crowd who really enjoyed Mark Ri-dout's presentation.

Not only did he dazzle us with his superb images, he displayed slide show software and even had door prizes. Thank you Mark and Chantal for a job well done!

February sees the return of Mary Talbot our perennial favorite speaker! Mary's topic is "The Joy of Letting Go, Unwrapping your Creativity" For a sneak preview visit

<http://www.marytalbotphotography.com/> and come to the meeting with your imagination at 100% .

Our theme at this meeting is "Money"

Just a reminder that the March presentation is "Members Slide Shows." They should be under 5 Mins and if you have them on a flash drive or CD/DVD you can give them to Terry Carpenter at the Feb meeting.

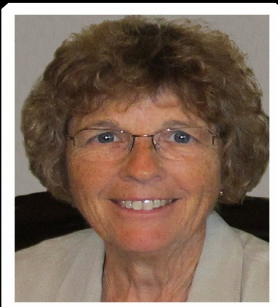
I would like to thank all those who participated in the critique process last month. We had some excellent responses from the floor and I am sure folks learned a great deal. Please, please keep it up. We are asking those who submit to send one (1) picture each month for critique. Your name will not be displayed and you don't have to state that it is your image if you don't want to.

At the April meeting we will have a "bring and buy" sale. If you have items you are not using here is a chance to sell them or get a bargain piece of equipment. We will have a table laid out for items. I would suggest you label them with your name and asking price.

Finally...in June we have a representative from Henry's Pickering store who is bringing some of the latest hardware (Toys?) for us to try. If there is anything you would like to see or try out e-mail me at [brian.crangle@cogeco.ca](mailto:brian.crangle@cogeco.ca) and let me know.

Look forward to seeing you in Feb

Cheers Brian & Carol



Carol

### UPCOMING THEMES.

Feb.....Money.  
Mar.....Chaos.  
Apr.....Grafitti.  
May....Breath of Spring.  
Jun....Fur & Feathers.



Brian

PPS January Meeting on Wedding Photography with Mark & Chantal



## Murray's Prose for January Viewfinder

Moonstruck

Murray Palmer, 2013

Grey blue is the sky in the darkening twilight  
When thoughts take wing, and embellish one's sight.  
A lattice of branches obscures the celestial space,  
Leaving room for the pale moon's richly fabled face.  
Some peoples see a rabbit, a dog or human configuration,  
But these images reside only in fertile imagination.  
Perhaps our interpretation of the dark blotches against white  
Recall those of cavemen who were awed by the sight  
Of the lunar seas that pockmark the moon's full disc  
That appeared dependably in a world of great risk.  
The Norse Wolf chased the Moon crossing the sky by carriage,  
And caught it at Ragnarok, causing us to sorely disparage  
And covet the wolf's human-like predatory existence.  
Still folklore and fable deprive wolves of natural innocence.  
But wait, isn't there a wolf's head in the moon's lower quarter?  
Why shouldn't Man and Wolf spirits share a New World Order?  
As the darkness fell on the last day of 2012,  
There began a series of events into which authorities now delve ...  
Four of Haliburton Forest's wolves were let loose by perpetrators  
Of unknown identity – animal rights punks or brazen wolf haters?  
A blood-stained drag trail, shell casing and hair now indicate  
That Haida was killed by criminals, possibly lured by bait.  
What would possess a man to destroy a much-loved wilderness icon?  
He must surely have a sense of self worth no more than a lichen  
That clings hard to the granite rock of the Pre-Cambrian Shield;  
He's a man driven to plunder what Earth will yield.  
Most of all, I'm saddened that he never had opportunity to see  
Just how rewarding love for our fellow creatures can be.  
Though their songs seem mournful like those of the loon,  
Wolves aren't mad hellions who howl at the moon.  
More like us than our ape cousins to our early human forebears,  
They possess intelligence, discipline, loyalty, and love if one cares.  
I see now the moon as an eye within a cloudy wolf's face.  
Not vicious but confident, it reflects ancient wisdom and grace.  
I mourn the loss of Haida, leader of the Haliburton Forest pack,  
And hope for social tolerance though his guidance they lack.  
Somewhere there's a cowardly killer who tried to raise his station  
By impressing peers with such acts of desecration.  
May there always be a place in your heart for a creature so grand,  
And may the howl of the wolf be heard throughout wild land!

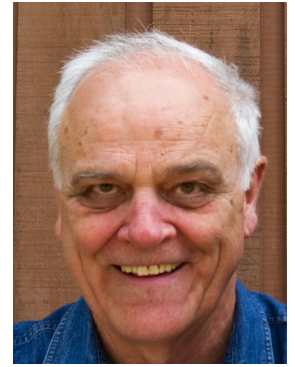




## Part 6 of Beyond P Mode

### Exposure Compensation

(By George Gillespie)



### Exposure Compensation

So far, implied in the discussion is that the exposure meter in the camera will give us the correct exposure for a picture. That might not be the case. For example if we take a picture of a black dog surrounded by snow the exposure meter in our camera will set the exposure so that the snow is a bit grey and the dog is really black and might lack detail. In other words, it's underexposed. Alternatively if we photographed a white cat surrounded by mounds of coal the opposite will occur. The coal will look a bit grey and the cat will be overly bright and lack detail. In other words, it's overexposed. What can we do? Move the cat to the snow and the dog to the coal? That won't work either.

To understand how this situation arises we have to take a closer look at how the exposure meter works. The meter reads the light reaching the sensor and assumes that the light is coming from an "average" scene. It would be delighted with a picture of a black and white checkerboard because as far as it is concerned an "average" scene is made up of things that are half white and half black. If these black and white areas were blended together the result would be grey, and would look like a photo grey card, which you might have seen. The exposure meter is not all that clever, and when it sees the light reflected from a scene it assumes the photographer is pointing the camera at a photo grey card. When the camera is actually pointed at a field of snow the meter doesn't know this but assumes it is a grey card. The light from the snow is much brighter than the light that would have been reflected from the grey card. The meter would tell the camera to reduce the aperture and/or speed up the shutter so that the image stored in the camera would look like the grey card. (Remember, the meter thinks the subject is a grey card.) As a result, when you see the picture it will be underexposed and the snow will look grey.

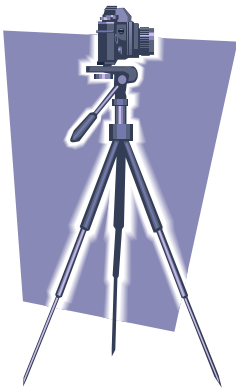
So how do we tell the meter that we're pointing the camera at the snow? We do it using Exposure Compensation, which allows us to change the exposure from that calculated by the exposure meter. There is likely a control on your camera for adjusting exposure compensation. In the case of the snow we increase the exposure so that what gets recorded is white instead of grey. In the case of coal we would decrease the exposure so that what gets recorded is black instead of grey. If you are using the Manual Mode you would change the exposure with the aperture and/or the shutter speed. As an experiment, photograph a white sheet of paper and look at the Histogram. You'll see a peak half way along the horizontal axis indicating the subject is grey. (When we display an image on our camera there usually is an option to view the Histogram. This is a display of scene brightness with the brightest values showing on the right side, darker values showing on the left, and grey values in the centre. Reading histograms is another topic that could be addressed by a member willing to prepare a write-up.

## Part 6 of Beyond P Mode - Exposure Compensation

Camera manufacturers tried to help us by providing evaluative (Canon) or matrix (Nikon) exposure metering. There are several photocells in the meter and a processor looks at the output from those cells and makes an educated guess as to what we are photographing. If it sees a light area at the top of the image and a darker area below, it will think the light area is the sky and might expose for the darker area below. There are a lot more complicated scenes that it tries to compensate for, and it works reasonably well, but not always. When it gets it wrong we have to use the exposure compensation control to get it right. How do we know when to use it? One way is with experience, and the other is to look at the histogram and decide if compensation is needed.

The other thing the manufacturers did was to provide spot metering. With this we look at the scene and see if there is some part that we want exposed as if it were a grey card. For instances there might be a barn in the scene and we want it exposed so that it would sit somewhere around the middle of a histogram. We would point the spot meter at the barn, hold that exposure and recompose to take the photograph.

If a scene has a dark area and a bright area we could run into a problem. If we expose for the dark area so that there will be some detail in that area, then the bright area might lose any definition and will appear blown out. If we expose for the bright area the dark area will become too dark and have no definition. In this case the dynamic range of the scene exceeds what can be captured by the sensor. There are no friendly ways to solve this problem. We would either have to compromise by exposing for what is the important part of the scene or fix it later using software. This is a topic that cannot be covered here, but once again, it's a subject open to any member who wants to take it on.



The Viewfinder along with the Club members would like to thank George for his informative and interesting articles about how to get beyond the P Mode. He obviously gave the subject some thought and we appreciate his help and suggestions in our never ending effort to capture the best images that we and our equipment can produce.



## Bob Brown our Outing Director invites you to

# Campbellford's Polar Bear Plunge

Now Just a Minute! Hang on!

..... add a little Snow-covered Demolition Derby, sprinkled with Cheese and Chocolate and top it all off with a glass of Church Key Beer! Now that's Lunch on an Outing, PPS Style!

Date: January 26th.

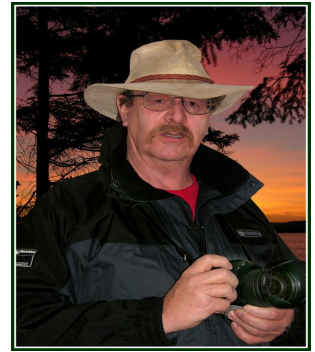


Come join us for an outing that will give great photo opportunities, a variety of interesting subjects and something for everyone in our neighbourhood town in Trent Hills. Visit the Chocolate and Cheese contest in the morning, place a bid for your favourite, capture some brave souls picking icicles from their toes. Visit the famous Church Key brewery. Catch a flying bumper at the Fair Grounds. There is some wonderful buildings to shoot as well. More info at meeting.

Events to be finalized. Thanks to photo contributors, don't chocolate is good for you, icy water of Trent not so much, polar bears are not real, catching bumpers is not allowed in our insurance policy, glass beerway is not real currency



## From your Projectionist Terry



### **IMPORTANT PLEASE READ**

To make life a little easier I have created a much easier and simpler way of renaming your images for submission to the monthly meetings.

**Instead** of using the existing method of file name ie FIRST NAME-LAST NAME-MONTH-CATEGORY-NUMBER

#### **We will now use**

INITIAL FOR CATEGORY, THE NUMBER, and NAME

CATEGORY INITIALS WOULD BE

**C** FOR CRITIQUE

**P** FOR PHOTOGRAPHERS CHOICE

**T** FOR THEME

**O** FOR OUTING

NUMBERS WILL BE 1 OR 2 FOR EACH CATEGORY AND 1 TO 5 FOR OUTINGS DEPENDING ON HOW MANY IMAGES YOU SUBMIT.

THE NEW NAMING SYSTEM IS NOW CATEGORY INITIAL AND NUMBER OF IMAGE WITH NO SPACE BETWEEN, THEN SPACE, FIRST NAME, SPACE AND LAST NAME. NO UNDERSCORE OR DASHES ARE NOW NEEDED.

SAMPLES OF THE NEW NAMING SYSTEM ARE AS BELOW

**P1 TERRY CARPENTER OR P2 TERRY CARPENTER FOR PHOTOGRAPHERS CHOICE**

**T1 TERRY CARPENTER OR T2 TERRY CARPENTER FOR THEME**

**C1 TERRY CARPENTER FOR CRITIQUE (Note names will not appear during slideshow)**

**O1 TERRY CARPENTER UP TO O5 TERRY CARPENTER FOR OUTING**

Benefits will be easier file naming for members. Easier loading of images from website to Faststone program. Less time and effort involved making presentation for club. Also the name etc. will look much neater on the image being displayed at the meeting.

I hope this hasn't caused you much inconvenience. May I suggest you print this and keep for future reference. Please submit your images no later than the Friday before the meeting.

Thanks for your cooperation-Terry Carpenter



## More Info regarding March Slideshow

Hi Folks

At the March meeting we will be showing members slide shows. Therefore our next meeting ( Feb. 5th ) we are asking you to bring your presentation to the meeting on a memory stick or CD etc. This will provide us with time to load the shows to the laptop and check them out to see if they will run properly and get back to you if there is a problem. The memory sticks and CD's will be returned to you at the March meeting.

For those of you who may not be able to make the meeting you can drop them off at my house the following week up to Feb 12th. You can drop them in the mailbox. Please phone prior so I can expect them, thanks. 705 742-1724 ( I can give directions then )

Your presentation should be an executable file or be able to run on a windows operating system. ( media player etc.) For those wishing to make a presentation and don't have a program to do so, a download is available that you can make a very good show with called Photo Story 3 for Windows. and is available free from <http://www.microsoft.com/en-us/download/details.aspx?id=11132>

or [http://download.cnet.com/Photo-Story-3-for-Windows/3000-12511\\_4-10339154.html](http://download.cnet.com/Photo-Story-3-for-Windows/3000-12511_4-10339154.html)

If you are using Windows 7 try <http://windows-movie-maker-vista.en.softonic.com/> for windows movie maker. This is also a free download.

Your presentation can be up to 5 min long. ( please don't go over this time frame ) When you submit your show please rename the file with the title of your presentation and also your name. This will enable us to announce the members show coming up. **Also please attach your name and phone number to the memory stick or CD** when bringing to the meeting. This will make it easier to get it back to you. Looking forward to seeing all of your great productions.

Cheers Terry Carpenter

Projectionist

## *More Info Regarding Regular Meeting Slideshows*

### **FROM YOUR PROJECTIONIST**

For those of you who weren't at the last P.P.S. meeting, some changes were made. It was decided that we will no longer critique members' images in the P C and Theme categories. We will, however, still critique images submitted to the Critique category. If you wish to get input on your images by constructive comments and improve your imagery, submit one picture a month to the critique category. We can all benefit from critiques. I learned long ago that one can never know all there is about photography, and since I first picked up a camera and 30 plus years later I am still learning. That's half the fun of photography, seeing other people's ideas and listening to comments made on my own images.

The PC, Theme and Outing images will be shown with soft music playing in the background. While images are being shown members can, at any time, ask questions or mention briefly any information about their own image they may wish to share, such as the image title, where it was taken, what was entailed, etc., or ask the photographer how did they create that image, where was it taken, etc.

Also, one or two short creative videos will be shown prior to members' images. These are to show education on photography plus be creative with our cameras.

Hopefully, we can all learn from these changes. So let's all get out there, take pictures, submit them and learn what others have to say and, most of all, have fun with your photography. See you at the meeting.

**PS Let's see more of your images in these categories. Every photograph contains a story, show us yours.**

*Cheers Terry*

Hi Eveyone

Message from Terry Carpentar

As requested here are the links to the video tutorials as shown at the Jan. meeting.

**White balance**

<http://www.youtube.com/watch?v=VcbOVNjZpt8>

**Cooking oil bubbles**

[http://www.youtube.com/watch?v=SCYG7HO\\_SZo](http://www.youtube.com/watch?v=SCYG7HO_SZo)

## Other Member's Contribution's

Here's a pic and a story.

During the summer we had a family barbeque to celebrate our daughter and son in law's twenty years together. Part of the festivities included a BBQ'd pig on a spit. As the pig was quite large the head had to be removed and cooked separately. This was our grandson Seth's reaction. It did not prevent him from eating the roast pork however!.

Cheers Brian



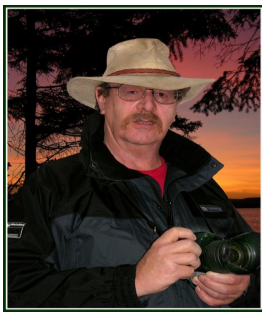
## Your Executive Members for 2012-2013



Liz Crangle -PPS President



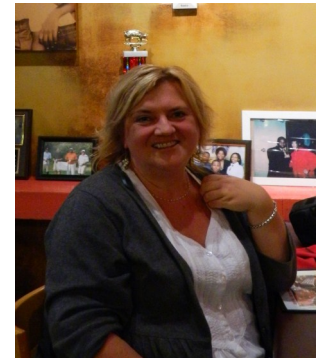
Brian Crangle and Carol Pearson Program Directors



Terry Carpenter –Projectionist



Cathy Schofield-Web Master



Sarah Tanner-Secretary



Paul Macklin-MAL



Dawn Macklin-Membership



Joanne Stockton-Treasurer



George Giarratana –Viewfinder



Bob Brown –Outings

Reserved for your Image

Reserved for your name

## Through the viewfinder as seen by your editor



George Giarratana

[ggiarrat@gmail.com](mailto:ggiarrat@gmail.com)

Who would have thought that some people would be hoping that it would warm up for the polar plunge in Campbellford on Saturday. Such is life in the great white north.

Why do we do outings? Social event, exercise, excitement of eating out in some community we may not be familiar with and the gastronomic joys or disappointments we may experience, chance to interact with strangers and to meet some new people, well yes all of the above.

And as a huge bonus to take some images of places, peoples and things that we can add to our growing portfolios. We get to practice alongside other photographers who may know more than we do in which case we can learn something or maybe we can help someone who is trying to improve their efforts. We also get to test and use our equipment always seeking to find its strong and weak points in order to do the best we can. Sometimes the enjoyment comes in the trying not always in the results.

Either way the sum total of all of the above can be summed up in one word **FUN.**

Hope to see **you** at the next outing.